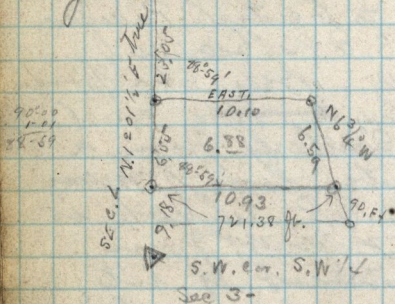


L. P. Bensen

✓ Bsq. 9.18 ch N. from S.W. cor. of S.W. 1/4 Sec
 3 T-5-N-R-1-W, thence East 10.93
 N 6 3/4° W 6.59 ch N. 10.10 ch. S 6.55 ch to
 leg.



✓ Bsq. N.W. cor. S.W. 1/4 Sec. 3 T-5-N-R-1-W
 E 17.52 ch, S 39° E 11.50 - S 45 1/2° W
 20.07 ch W 9.87 ch N 23.05 ch to leg
 42.80 a L. P. Bensen to
 John Cottry.

Copy of deed from P. C. Bensen to
 W. Geisler dated July 22-1876-0-31-
 ✓ Pt. S.W. 1/4 Sec. 9 T-6-N-R-1-W, Bsq. at S.W.
 cor. of said 1/4 Sec. Running thence West
 19.72 ch N. 5.00 ch E 17.37 ch N 14.26
 E 17.30 ch S 18.26 ch to leg. ()
 contains 27.37 acres.